



شركة ام اي العالمية للتجارة ذم م
ME INTERNATIONAL TRADING WLL

WETSUIT® WATER PROOFING SYSTEMS

M E International Trading WLL are authorized suppliers of USA manufactured 'WetSuit®' waterproofing membrane systems in Bahrain.

The WetSuit® System consists of a range of environmentally friendly solutions used throughout the building envelope that meet specific roofing, waterproofing and air/vapour barrier requirements. All are fluid applied, seamless membranes, water based, cold spray applied, have no VOC's, Class A fire rated and self-extinguishing.



WETSUIT SYSTEM COMPONENT PARTS



The WetSuit® liquid membrane is a fully self-adhered, cold spray applied, self-flashing membrane with a wide variety of uses for virtually all above and below grade applications.

The WetSuit® 1 Part is a water-based, medium viscosity, self-leveling membrane that can be sprayed, brushed, or roll applied up to 80 mils wet vertically. Wetsuit® 1 Part is used in roofing, waterproofing and air/vapor barrier applications.



The WetSuit® UnderCover is a water-based, medium viscosity, self-leveling membrane that can be sprayed, brushed, or roll applied up to 80 mils wet vertically. UnderCover is used exclusively under, or between, the Wetsuit® products.



WetSUIT® Trowel is a high viscosity, water-based coating specifically designed as a roofing and waterproofing patch. Applied by trowel or brush, it is ideal for sealing leaky roof penetrations, ducting, flashings, cracks, joints and tears. WetSUIT® Trowel is ideal on EPDM, TPO, asphalt, wood, metal, concrete and foam.

WetSUIT® FiberatedTrowel has been reinforced with fiberglass strands which cures into a high tensile strength, minimum elongation roofing and waterproofing patch.



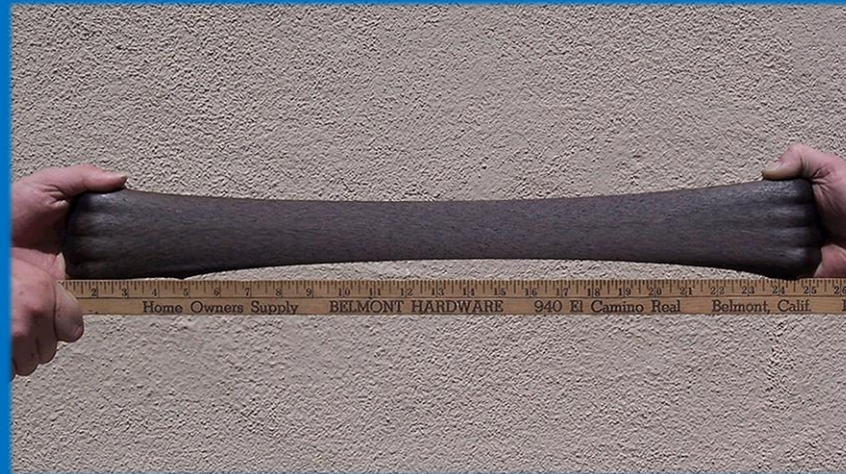
Invisilink™ is a lightweight, yet super durable, tear resistant seam fabric. Invisilink™ features stitch bonded polyester which is one of the strongest materials available to the roofing industry for use as reinforcement in cold process roofing.

Wetsuit® PrimeMate is a high quality, plasticizer free, single component, water-based, acrylic primer for spray brush or roller application. It is designed to provide both excellent adhesion as well as plasticizer migration resistance.



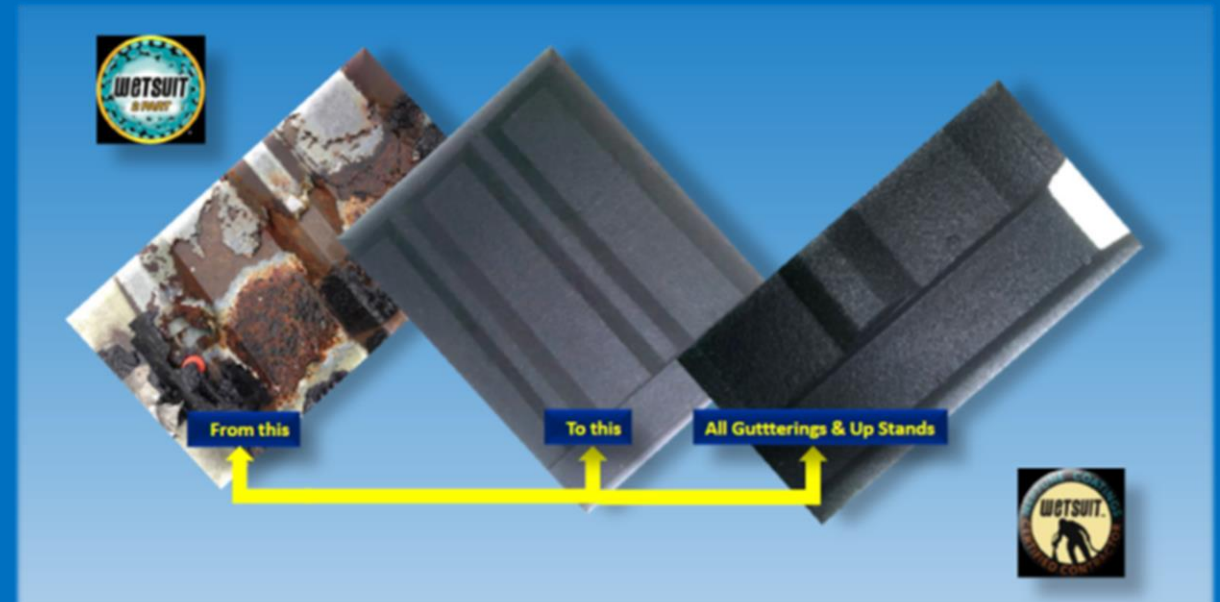
WETSUIT® CHARACTERISTICS

- 2 125 % elongation
- Puncture proof
- No need for geotextile backing
- No need for backfill fines
- Inert & non toxic
- Application non labour intensive
- Self flashing
- Superior wind uplift
- Class a self-extinguishing fire rating
- Takes ponding water indefinitely



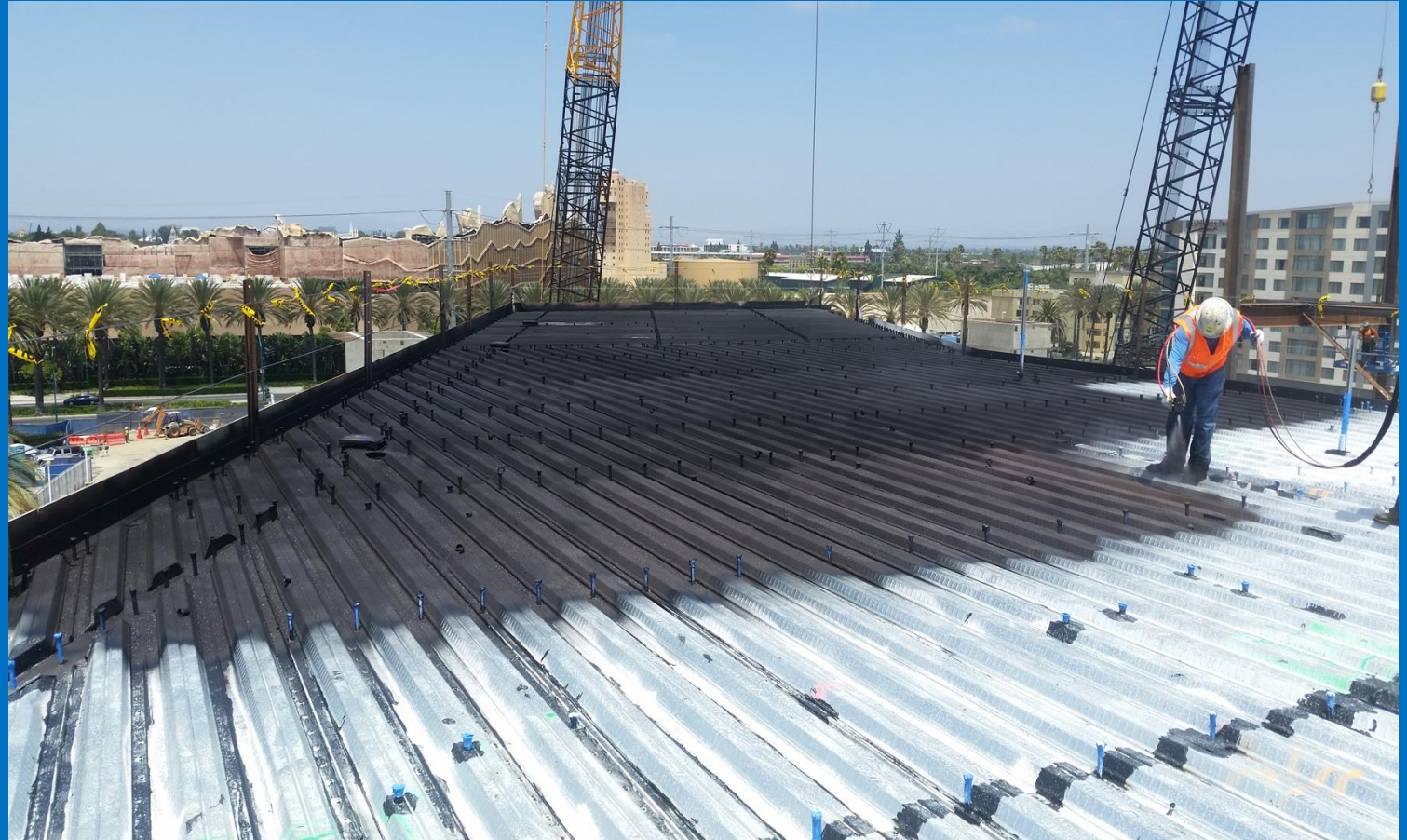
WETSUIT® APPLICATIONS

- Apply to new & dilapidated roofing using Wetsuit® cold spray water proofing membrane.
- The NEPTUNE COATINGS WETSUIT® system can usually be applied over old existing membranes without the need for tear off.
- Recover dilapidated & leaking profile roof sheeting using Wetsuit® cold spray water proofing membrane.
- The Neptune Coatings Wetsuit® system can arrest & prevent rust while increasing energy efficiency. Questionable seams and fasteners are covered & sealed by the monolithic membrane.



Metallic Rooves & Corrosion Protection

By its performance as a full Air & Vapor barrier (Class 1 Impermeable), its high impact resistance and its extraordinary adhesion to metallic structures, Wetsuit® is the perfect solution for waterproofing all metallic surfaces and protecting from impact & rust. It is also an ideal solution also for "**cut edge corrosion**" which causes structural weaknesses. Wetsuit® is an "**Anticorrosion**" durable membrane for steel, pipes and many other metallic structures.



Wetsuit® Below Grade waterproofing

- Zero requirement for geotextiles, graded backfill and fines as Wetsuit® is puncture proof.



LPG STORAGE VESSELS

- Wetsuit® Waterproofing application on restored, LPG vessel concrete support plinths where water condensate had caused corrosion to rebar and as a consequence cracks in concrete.



Corrosion Protection

Wetsuit© provides
an "**Anticorrosion**" durable
membrane for steel, pipes and
many other metallic structure



Encapsulate Asbestos Roofing Using Wetsuit® Cold Spray Membrane

- Asbestos still represents a major threat to public health. Despite all best attempts at asbestos removal it is still present in many areas such as corrugated rooves, storage silos conveyor housings and as insulation material. Degradation may create an additional threat to public health as the exposure of rooves and insulation to the elements may be sufficient to release fibres to atmosphere. Furthermore, most companies that have asbestos on their premises are unable to justify the cost of removal by monopolistic specialists.
- Asbestos encapsulation using Wetsuit® cold spray membrane is a practical solution, extremely durable and carries a Limited Warranty of up to 20 years.

ENCAPSULATE ASBESTOS ROOFING USING WETSUIT® COLD SPRAY MEMBRANE



Wetsuit® Blast Mitigation

Elongation and tensile strength of the Wetsuit® allows its use for blast mitigation applications. By applying the product on a wall or a roof, the structure will better retain its integrity in case of an explosion or earthquake.

Wetsuit® will not only maintain the structure's integrity, avoiding the projection of shrapnel, but will also help contain the force of the blast inside a delineated perimeter to avoid further damage to the structure.

This application is particularly efficient for ammunition stores, gas turbine power plants, silo rooves, any equipment or vessel storage sheds. Such projects are managed on case by case.



Blast mitigation is an obligation for sites and companies dealing with potentially explosive atmosphere like silos and several chemical specialties. The solutions are often incorporating the reinforcement of structures in order to resist to an explosion, making those structures very expensive and not often successful in case of accident arising.

The anti-ballistic characteristics of Wetsuit® will also allow absorption of energy projected by a blast and diminishing or even preventing depending on shrapnel mass and energy to penetrate protected areas.

Wetsuit® opens the possibilities of another route by allowing to help much lighter structures support the consequences of an explosion.



WETSUIT[®] CERTIFICATIONS

